



HP288V Battery Pack Assembly Manual (HP288V 电池组装手册)

This manual applies to Lexus LEXUS- RX450h (sample) battery replacement guidance..

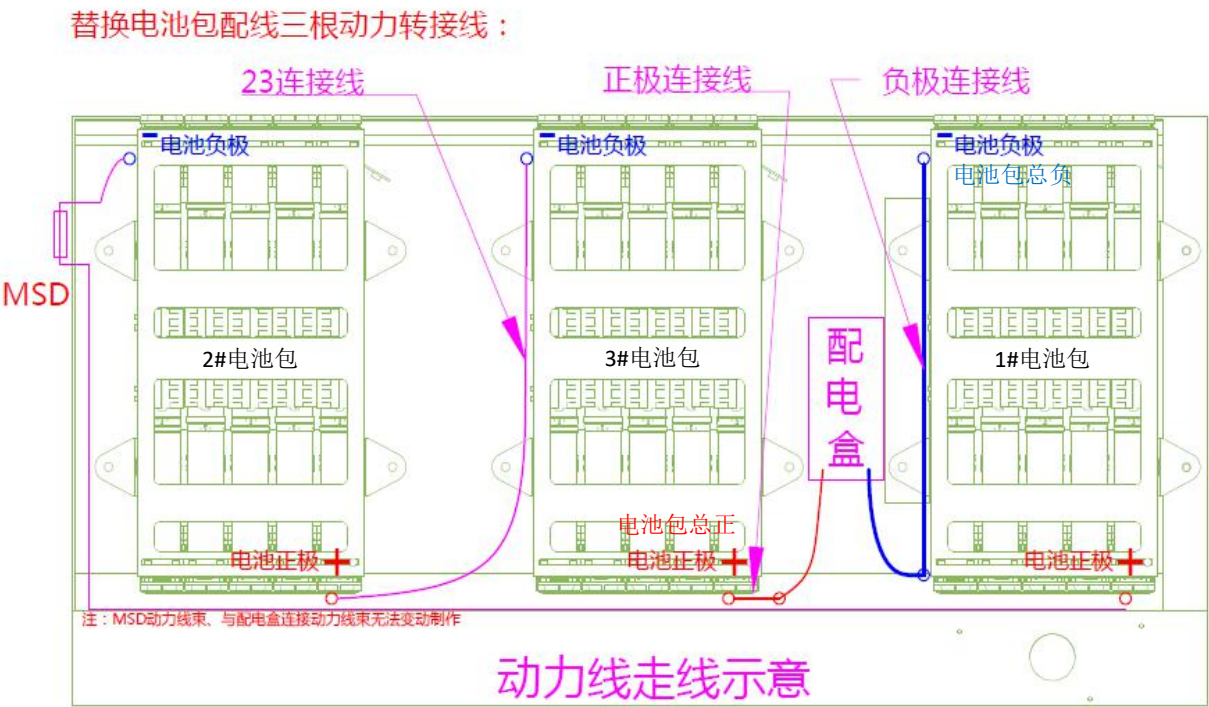
(该手册适用于雷克萨斯 LEXUS- RX450h (样品) 电池替换指导)

1. Please open the box #1 #2 #3 individually and find the components in following list（分别打开#1 #2 #3 箱并在盒子里找到如下部件）:

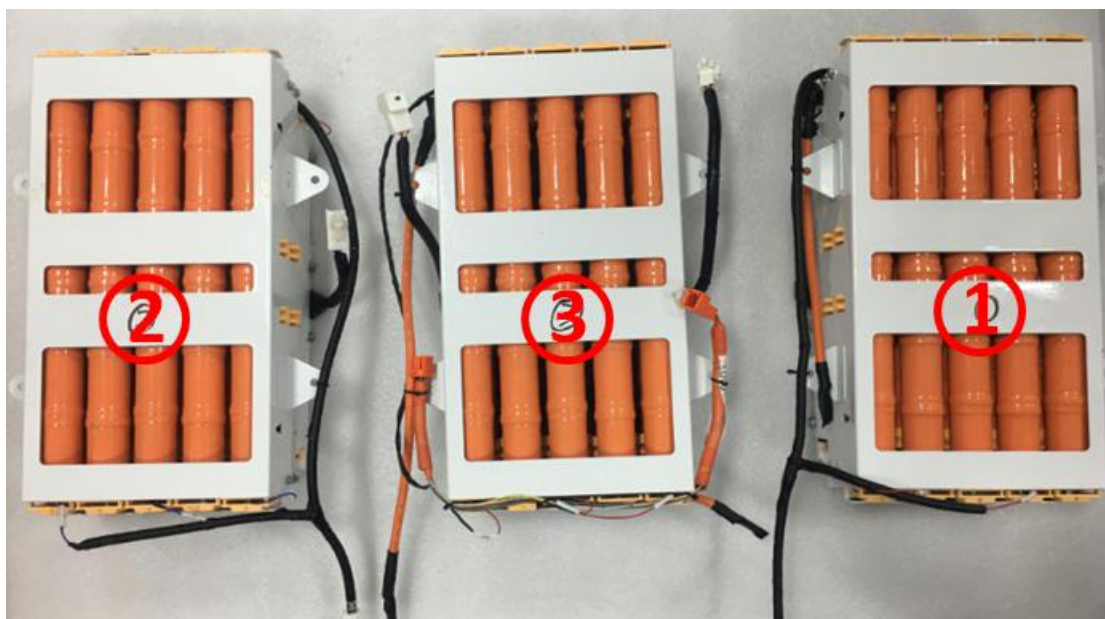
NO. 序号	Name 名称	Quantity 数量
1	Module 电池箱	3
2	Combination nut M5*10 组合螺丝	4
3	M5 六角螺母	4
4	绝缘帽	6
5	Insulating tape 绝缘胶带	1

注释：
电池包由1#、2#和3#电池箱组成，单个电池箱标称电压：96V，安装过程中，需严格防护电池箱正负极输出位置，杜绝外部直接将电池箱正负端连接，导致漏电、人员触电甚至电池短路现象。

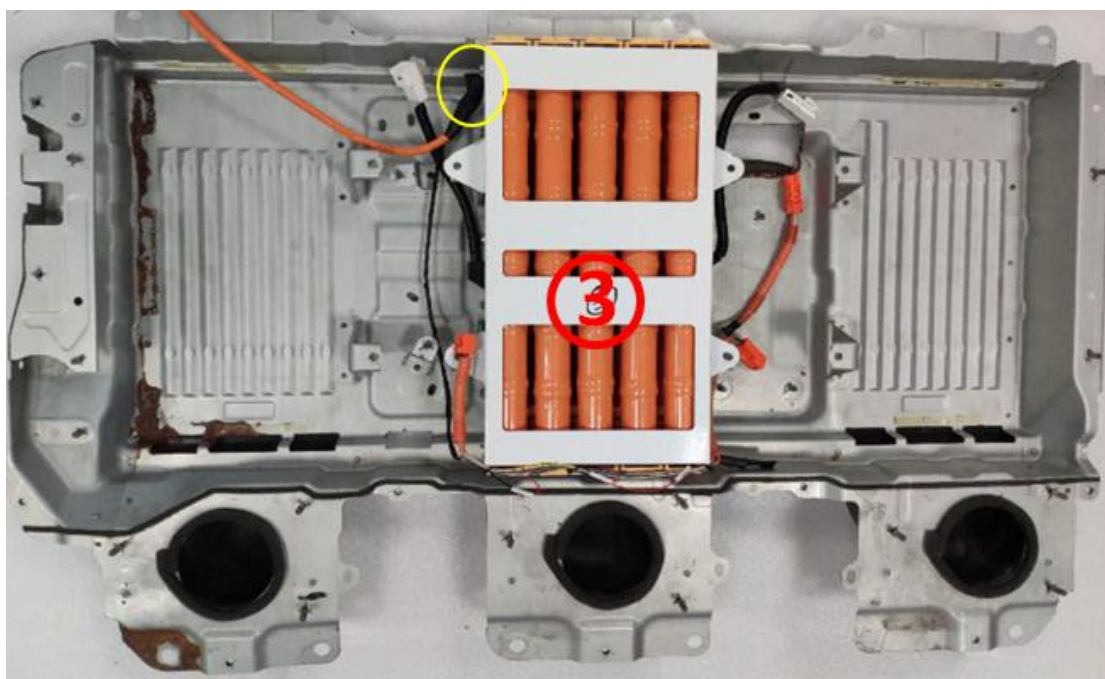
2. Power line diagram: red is: battery is extreme, blue is: battery negative extreme.（动力线走线示意图：红色为：电池正极端、蓝色为：电池负极端）



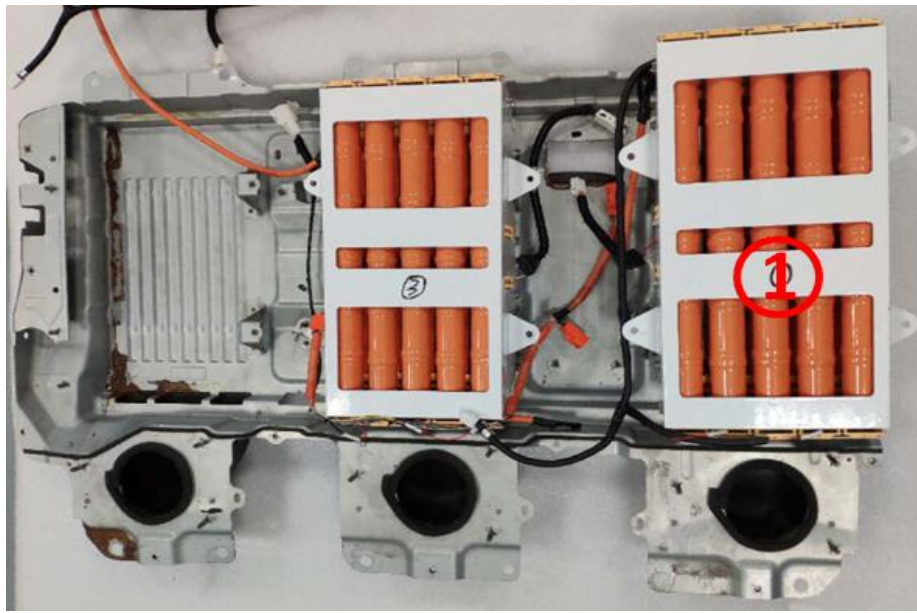
3. The state of dismantling: the combination of the battery box and the installation of the box in sequence（拆箱状态：电池箱 1#、2#、3#之间的组合，按照箱体安装顺序进行依次安装）。



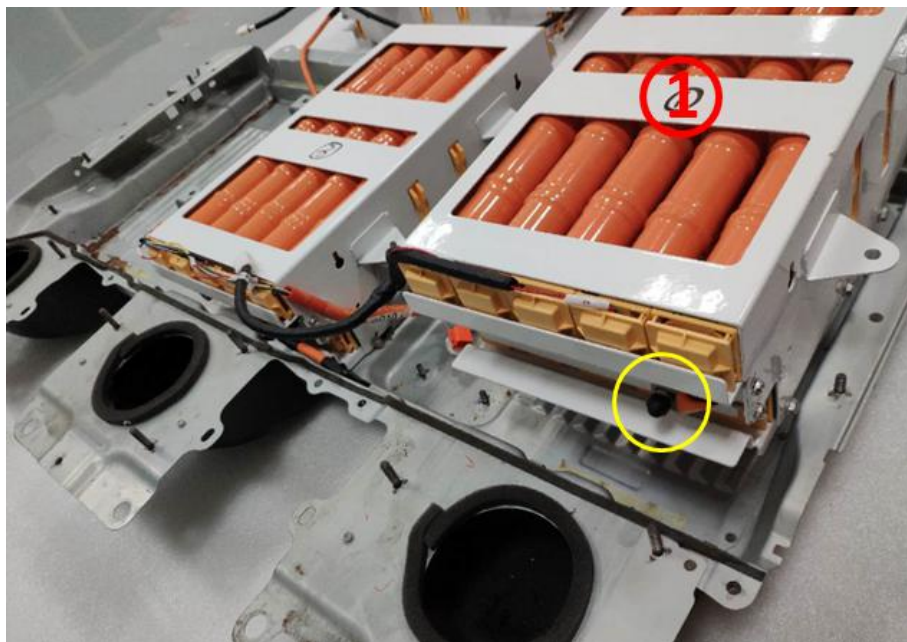
4. Install No. 3 battery box and connect the total negative power line with insulation cap. (安装 3# 电池箱，并将 23 连接线一端端子固定在 3# 电池箱负极处并固定拧紧，用绝缘帽防护)。



5. Install No. 1 battery case. (安装1#电池箱)。



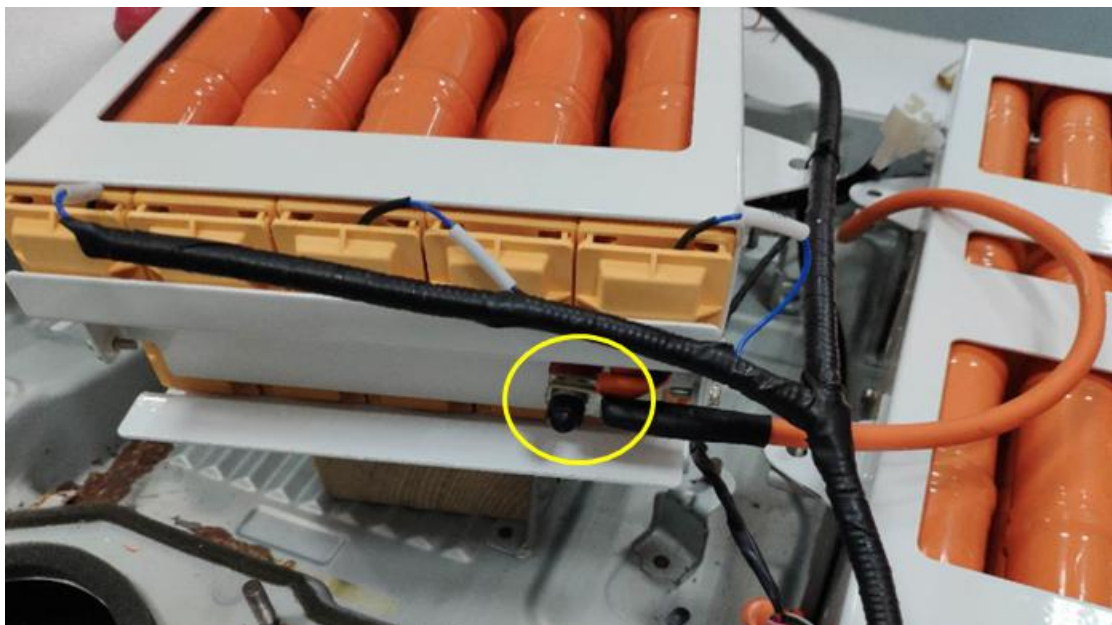
5.1 When installing No. 1 battery box, the bottom of the battery box should be padded with wood, the positive and extreme wiring harness of the original vehicle MSD should be connected, and the battery should be put into the battery box after being protected by an insulating cap. (安装1#电池箱时：先将电池箱底部用木头垫高，连接原车 MSD 正极端线束端子至 1#电池箱正极处，拧紧和固定，用绝缘帽防护后，安装至钣金箱体内)。



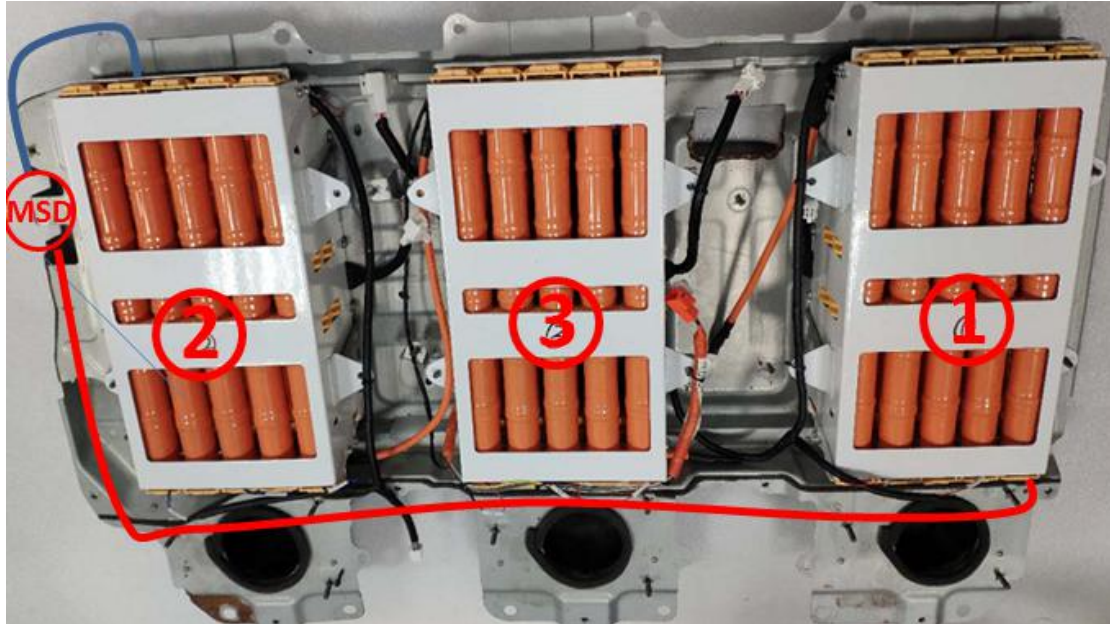
6. Install the No. 2 battery box and raise the bottom of the battery box with a wooden pad. Connect the negative terminal Harness of the original vehicle MSD and protect it with an insulating cap. (安装 2#电池箱, 将电池箱底部用木头垫高, 连接原车 MSD 负极端线束端子至 2#电池箱负极处, 拧紧和固定, 用绝缘帽进行防护)。



6. 1 At the other end of box No. 2, the main connecting wire of box No. 3 is tightened and fixed, and the battery is put into the battery box after being protected by an insulating cap. (连接23连接线: 将23连接线一端端子固定在 2#电池箱正极位置, 固定拧紧, 用绝缘帽进行防护后装配进钣金箱体)。



7. Fixed the box, connected the power wiring harness, installed the remaining power wiring harness into the distribution box, and connected the temperature acquisition wiring harness connector. (将1#、2#、3#箱体进行固定，将正极连接线、负极连接线分别与原车总正、总负连接线连接和固定，原车总正、总负连接线插件按原车顺序连接至配电箱)。



8. Connect the voltage acquisition wiring harness connector and connect the temperature acquisition wiring harness connector. (将电压采集线束、温度采集线束接插件分别进行连接)。



9. Put the battery pack back to the vehicle, and connect the main wire of cathode pole and anode pole in correct position. (the correct position are marked with red circle in the follow picture). (完成组装的电池组件，放回车辆，正确连接正负主线)。

10 Check everything correctly after complete all accessories installation , then install the original insurance component. (完成所有配件安装，正确检查一切后，安装原保险)。

Finally, start the vehicle. (最后,启动车辆)。